

# OPERATING MANUAL

 **BLASTRAC**®

## **MODEL BMS-T4200**

**Floor Scraping System**

**HIGH VOLUME RIDE-ON SCRAPER**



*Trust the Original Surface Preparation Experts*  
800.256.3440 [blastrac.com](http://blastrac.com)

# **TABLE OF CONTENTS**

<b>SECTION I</b>	<b>GENERAL DESCRIPTION</b>
<b>SECTION II</b>	<b>SPECIFICATIONS</b>
<b>SECTION III</b>	<b>SAFETY AND PRECAUTIONS</b>
<b>SECTION IV</b>	<b>INSTRUMENTS AND CONTROLS</b>
<b>SECTION V</b>	<b>START-UP AND BREAK-IN</b>
<b>SECTION VI</b>	<b>MACHINE OPERATION</b>
<b>SECTION VII</b>	<b>PREVENTIVE MAINTAINANCE</b>

# **OPERATIONS AND MAINTENANCE MANUAL**

---

**CUSTOMER**

---

**CUSTOMER SERIAL NUMBER**

---

**CUSTOMER DATE SHIPPED**

SECTION I  
GENERAL DESCRIPTION

**BMS-T4200**

The *BMS-T4200* is operated by a propane powered engine, driving a tandem hydrostatic pump system, creating a skid-steer power drive.

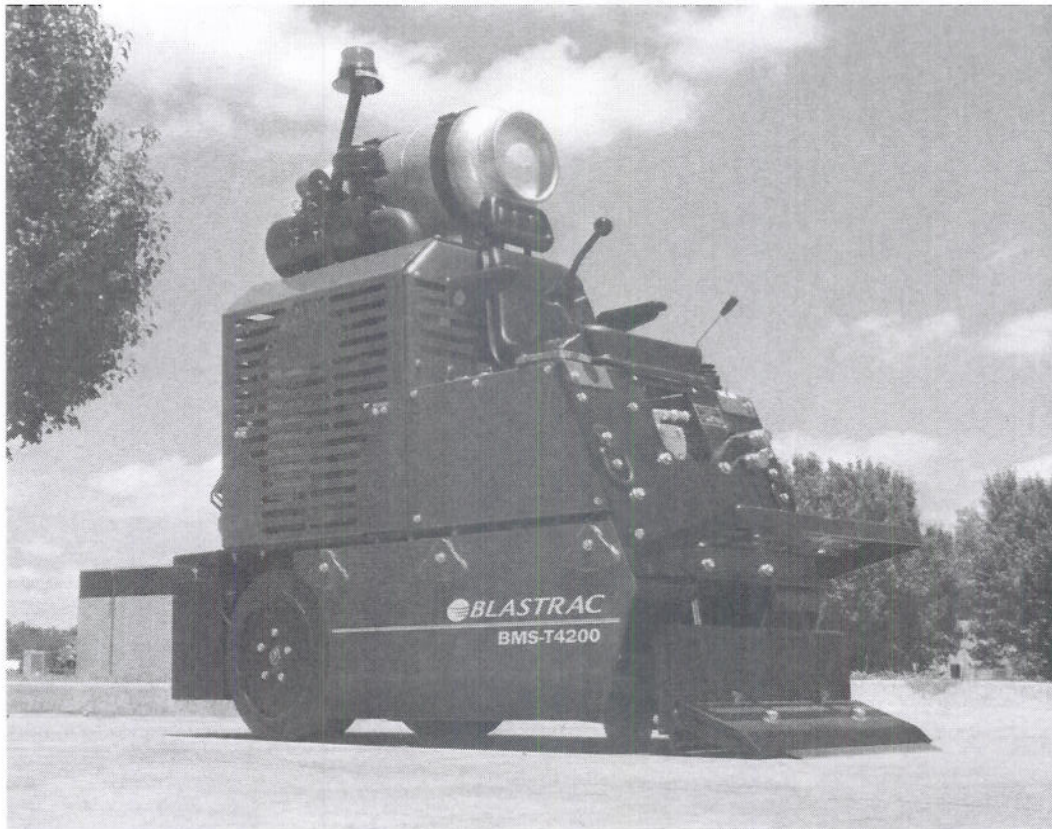
Surface coverings and coatings are removed by lowering a weighted blade onto the surface and moving forward under a high torque drive system. The surface coating is removed by a flexible sharpened blade conforming to the floor surface, with the weight of the machine holding the blade firmly to the floor. The weight does not allow the blade to lift or ride over well adhered surface coating material, thus lifting off the floor covering material.

After layers of carpet or laminates are removed, the machine can be connected to a hydraulically powered grinder, slicer, or hammer attachment to clean off adhesives, smooth concrete, or remove stubborn coatings or ceramic tile.



## SECTION II

# SPECIFICATIONS



<b>Weight</b>	<b>4200 lbs</b>
<b>Removable weight</b>	<b>2000 lbs</b>
<b>Fuel capacity</b>	<b>33 lb liquid propane</b>
<b>Hydraulic fluid capacity</b>	<b>15 gallons</b>
<b>Auxiliary output</b>	<b>12 gallons @ 2250 psi</b>
<b>Travel speed</b>	<b>500 ft per minute</b>
<b>Engine</b>	<b>Hyundai</b>
<b>Maximum engine RPM</b>	<b>3200</b>
<b>Minimum length</b>	<b>53 1/2"</b>
<b>Width</b>	<b>26"</b>

## SECTION III

# SAFETY AND PRECAUTIONS

Before operating the **BMS-T4200** please read the entire operation and safety manual with complete understanding of the safety section. If you have any questions on safety and precautions please call 1-800-256-3440.

There are several advantages to an effective safety program which include: lower operating costs, lower workman compensations, less work time lost, high employee morale, and less problems. No one can work safely without knowing what precautions to take to insure personal safety. Operators must know what equipment to wear, which job practices are safe and which are not, and must be aware of what hazards are possible in the work area. A regular schedule of Preventive Maintenance on your equipment is the best protection against unpleasant surprises that slow production and sometimes result in injuries. Here are a few suggested safety tips.

1. The first step before any maintenance or inspection takes place should be to stop the engine and disconnect the battery terminals.
2. Wear proper eye and ear protection and heavy duty work gloves at all times.
3. Practice good Preventive Maintenance.
4. Practice good housekeeping.
5. Allow the **BMS-T4200** to come to a complete stop, turn off engine, and chock rear wheels before performing any maintenance procedures.
6. Replace worn parts when necessary.
7. Do not reach into blade or control arm areas while machine is in operation.
8. Do not attempt to open any access door until the machine has come to a complete stop and the engine and propane is turned off.
9. Be sure all electrical inspections or changes are done by a qualified electrician.
10. Loose surface coating can cause dangerous footing. Always be alert and careful.
11. After replacing parts be sure all tools used are removed from the machine. Be sure all bolts and nuts are tightened. The loose connection of a rotating part could cause the part to fly off with explosive force, causing serious damage to the equipment and possible injury to the operator.
12. Always lower blade to the ground when the machine is unoccupied by the operator. Serious bodily injury may result if arms are not in the lowered position when not occupied.
13. Never allow unauthorized personnel or the general public into the work area.
14. The work area should be barricaded off to adequately keep all untrained persons out of the work site. If an unauthorized person enters the work area, stop the machine immediately and do not restart the machinery until they have left the work area.
15. Always allow a 200 foot buffer safety zone around all surface preparation activity.
16. Always run the **BMS-T4200** in a well ventilated area, with an approved OSHA air monitoring system in place at all times. Read and obey all safety labels placed on the machinery at all times. If safety labels have been destroyed or removed call 1-800-256-3440 for free replacement of safety labels prior to operating the machinery.

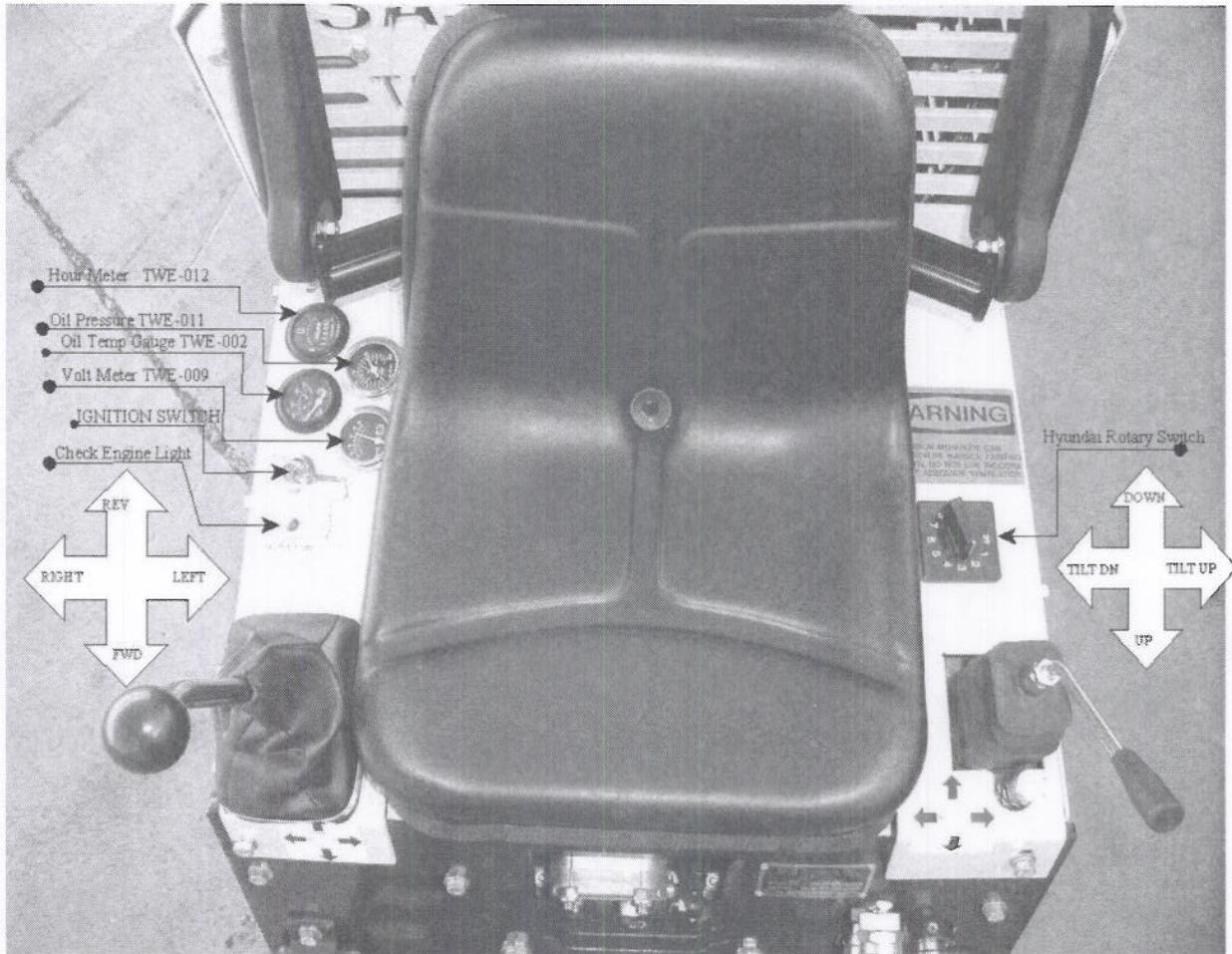


17. The ***BMS-T4200*** is **not a toy**. All operators must be over 18 years of age and must have read and reviewed the safety and procedures manual before operating the machinery.
18. The ***BMS-T4200*** is designed for surface preparation ***ONLY***. It is not intended for towing, pushing or any other procedure not described in this manual.
19. Propane systems should be checked and documented twice yearly by a certified propane professional for leaks or damaged parts. If a propane leak is detected, turn off propane tank valve and leave the machine immediately and seek assistance from propane professional. Do not use or restart machinery until it is determined safe.
20. Horseplay and or high speed cornering is not allowed with this machine and could cause rollover resulting in injury or death.
21. No smoking or open flame is allowed while machinery is running or within 50 feet of the machine.
22. Operator must be sober and not under the influence of drugs or medication and under full control of all bodily senses while operating this or any machinery.
23. When transporting the ***BMS-T4200***, it is recommended to use a low bed tilt trailer. This procedure insures the wheels do not leave a stable surface.
24. All ***BMS-T4200*** operators must receive safety training before performing any functions with the machine. BLASTRAC offers a maintenance orientation. New owners and operators are advised to call 1-800-256-3440.

# SECTION IV

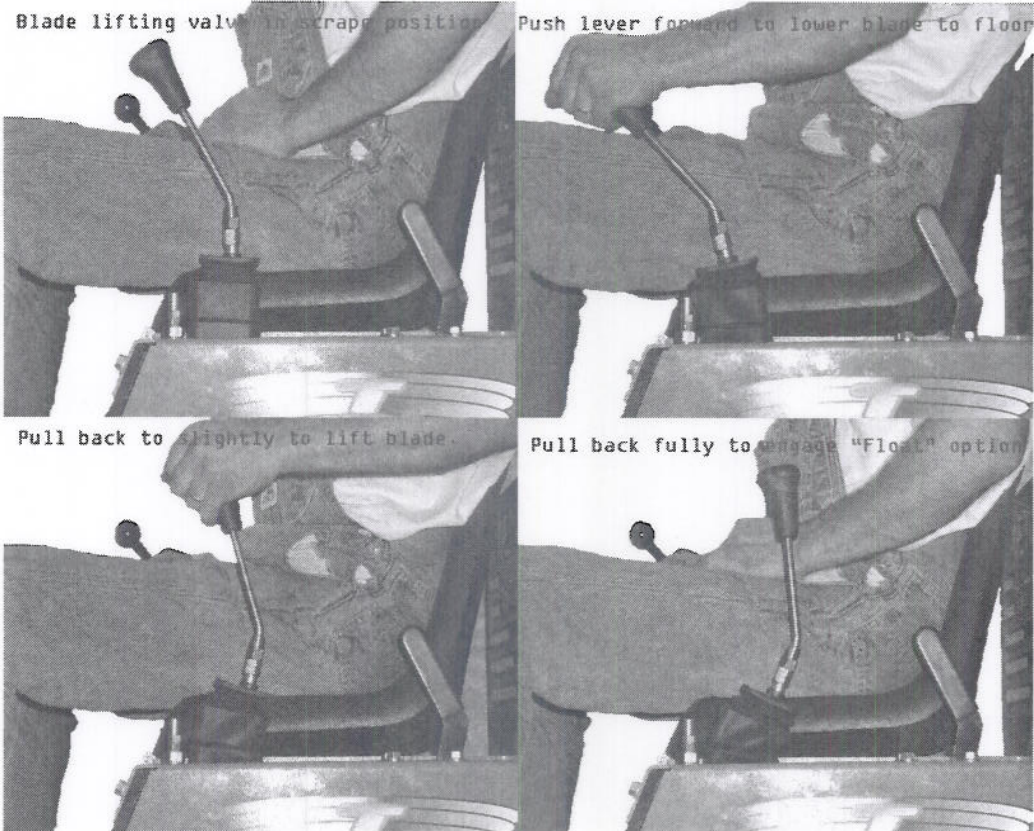
## BMS-T4200

### INSTRUMENTS AND CONTROLS TOP VIEW OF CONTROL AREA

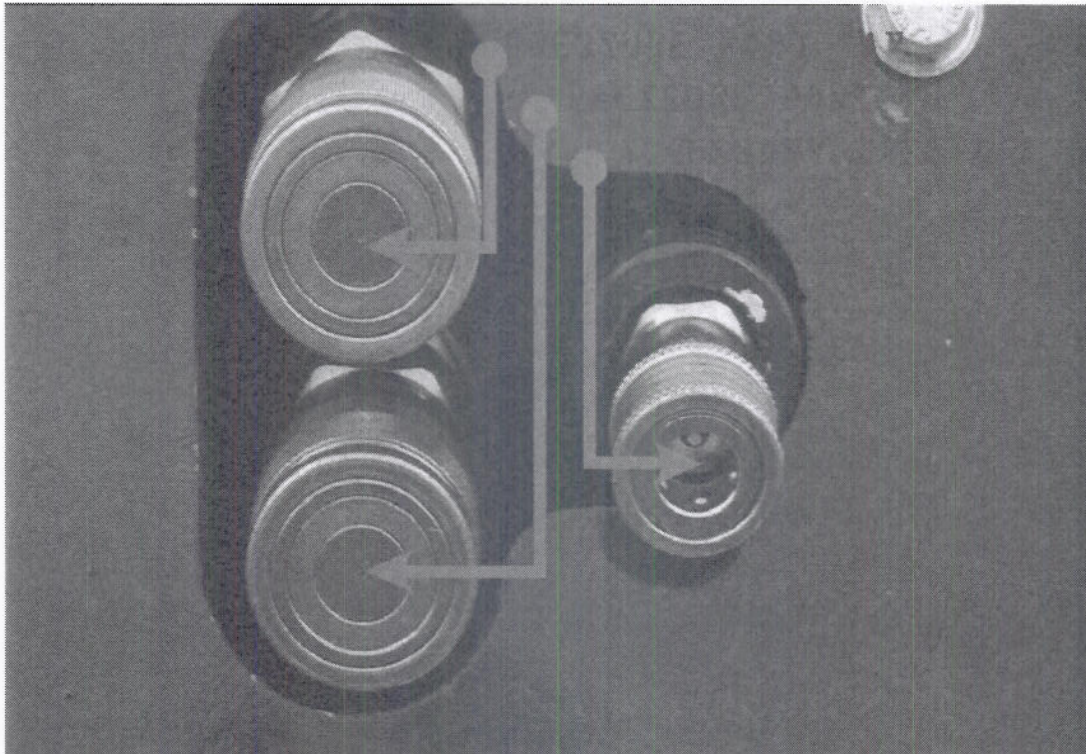




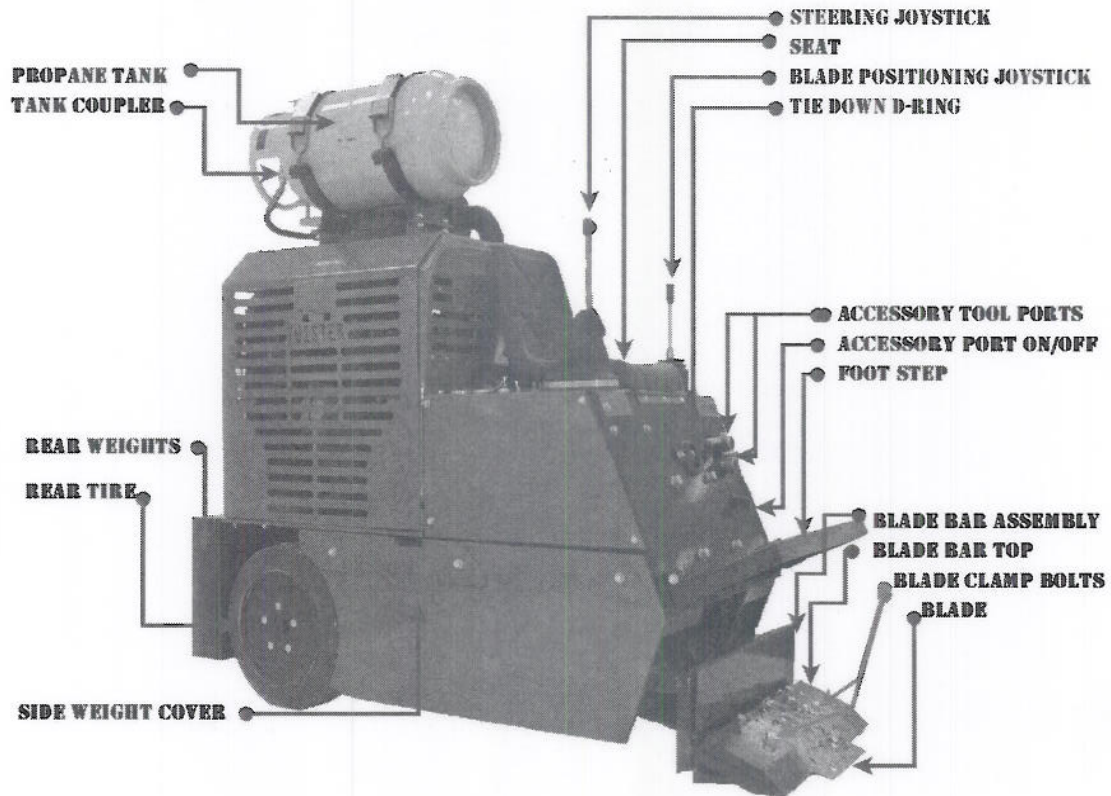
# BLADE CONTROL VALVE OPERATING POSITIONS



# ACCESSORY VALVE OPTIONS AND CONTROLS



# RIGHT SIDE DETAIL





## SECTION V

### START-UP AND BREAK-IN

The **BMS-T4200** has been safety tested and run at our factory prior to shipping. All fluid levels have been topped off; however, no propane has been added to the tanks for safety shipment purposes. Before running the **BMS-T4200** please check the following items that may have shifted or changed during shipping.

1. Raise engine covers and check oil level.
2. Check air cleaner filter element for snug fit.
3. All battery cable connections are snug.
4. Inspect for major hydraulic oil leaks. Snug hydraulic fittings using two wrenches. Use caution not to over tighten.
5. Fill propane tank.
6. Mount propane bottle in brackets, be sure bracket alignment pin corresponds with alignment slot on bottle.
7. Attach propane hose to liquid side of bottle by attaching to the handle valve. Snug fit the female connector attached to hose and slowly turn valve on. You should hear gas briefly enter the propane hose. Immediately check for propane leaks with soapy water solution. If leak persists after retightening the knurled female connector: **STOP**, turn off the bottle at valve and seek assistance from certified propane professional. Serious damage and or an explosion could occur.
8. Check lug bolts for tightness, torque 85-100 lbs.
9. Return all engine guards to proper position.
10. You are now ready to start the engine.
11. Once the engine is warming and running, and the operator is safely in the seat, the machine can be driven.

### NEW MACHINE BREAK-IN

Since the **BMS-T4200** is a very low maintenance and user friendly machine, the only break-in is for the HYUNDAI engine. Change break-in oil at 50 hrs as recommended by the engine manufacturer.

# SECTION VI

## MACHINERY OPERATION

Before reading the machinery operation section, new operators should familiarize themselves with the diagrams depicting the TOP, LEFT, and RIGHT views of machine. These drawings show the activation of all moving parts of the *BMS-T4200*.

Even though the *BMS-T4200* surface prep machine is very easy to drive and operate, it is recommended that all operators familiarize themselves with this equipment before attempting to use machine in a jobsite or removal situation. This machine has certain steering characteristics that should be noted and practiced prior to operating in a confined space or restrictive environment.

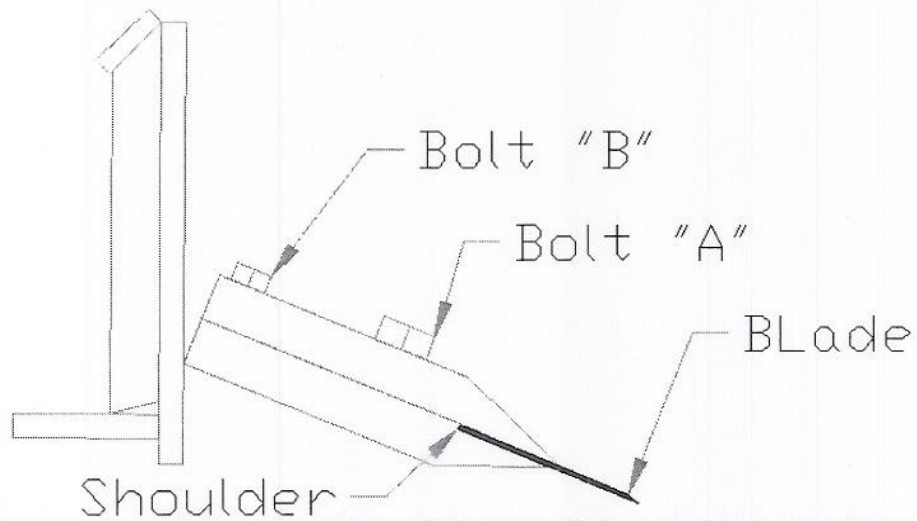
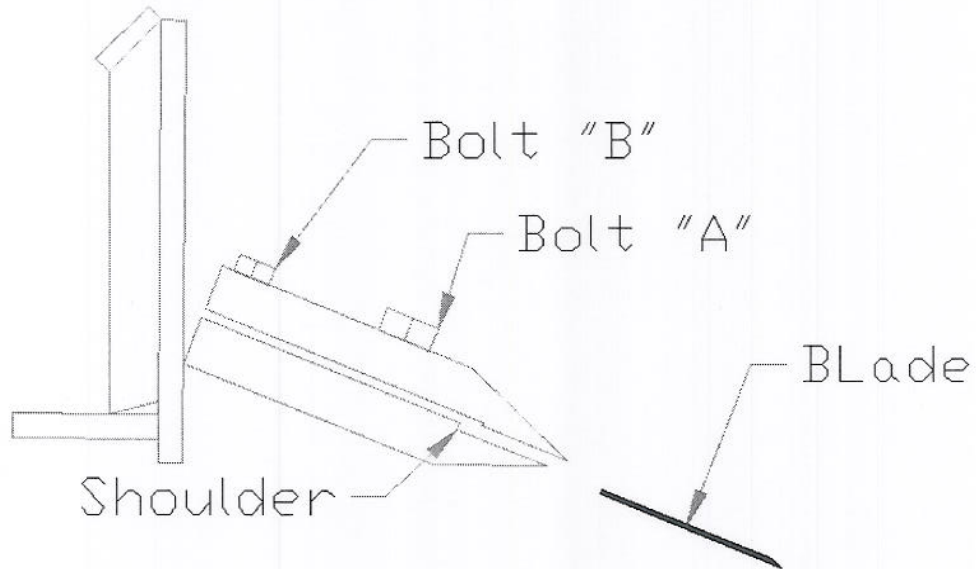
1. **TO MOVE THE MACHINE:** Using the right hand, slowly move the shifter lever in the desired direction of travel. Forward and left moves the machine to the left, backward and right reverses the machine to the right. It is just that simple to drive. Speed is controlled by amount of movement on the joy stick and or engine RPM. The higher the RPM'S the faster the machine will travel.
2. **TO ENGAGE BLADE TO SURFACE:** Move left joystick lever forward to lower blade bar assembly down. Move lever back to raise blade bar assembly off floor. Left and right movement adjusts the blade pitch.
3. Throttle control is on the left side of the seat, taking the unit from idle to 3200 RPM. The most optimum speed is 2600 to 3000 RPM. To change RPM of engine move throttle lever forward to increase engine RPM and backward to decrease engine RPM.
4. To change scraping blades: Lift blade to full UP position. Place a block under blade bar assembly for safety purposes. Stop engine. Loosen the set bolt at the rear of the Blade holder block using a 3/4" open-end wrench. Slide the dull blade out and Insert a new blade up against the shoulder stop. Retighten the set bolt and resume scraping. The large 1 1/8" blade holder bolt should not need to be more that hand tight. With a little practice you should be able to change blades in 15 seconds. Dull blades can be resharpened and reused many times.

### SEE DRAWING OF BLADE CHANGE PROCEDURE

5. Operators should lower the blade by pressing the left hand lever forward each time they get off the machine. This safety practice eliminates possible bodily injury from lowering the blade by unauthorized operators.
6. The transport caster should not be in contact with the floor while scraping. It will lift off the floor when blade is lowered. Caster contact with the floor while scraping will negatively affect scraper productivity and steering.
7. Do not transport machine with front of machine off the surface of floor higher than 1/2".  
**See illustration of correct scraping procedures.**

## BLADE CHANGE PROCEDURE

Loosen bolt "A" enough to insert blade into JAWS. Make certain it is up against the SHOULDER. Hand tighten Bolt "A". Wrench tighten Bolt "B" to ensure blade is secure.





## SECTION VII MAINTENANCE SCHEDULES

### SEE ENGINE SERVICE MANUAL

#### DAILY MAINTENANCE:

1. CHECK ENGINE OIL
2. CHECK ENGINE COOLANT
3. CHECK HYDRAULIC OIL LEVEL
4. INSPECT ENGINE RADIATOR COOLING FINS FOR OBSTRUCTIONS (DUST, DIRT, GREASE)
5. INSPECT HYDRAULIC OIL COOLER FOR OBSTRUCTIONS (DUST, DIRT, GREASE)
6. TORQUE WHEEL LUG BOLTS TO 125 FT LBS
7. INSPECT ALL HYDRAULIC COMPONENTS AND HOSES FOR LEAKS AND CORRECT LEAKS IMMEDIATELY
8. INSPECT PROPANE COMPONENTS, HOSES, AND FITTINGS FOR LEAKS AND CORRECT ANY PROBLEMS IMMEDIATELY

#### 50 HOUR MAINTENANCE:

1. CHANGE ENGINE OIL AND FILTER
2. CHANGE HYDRAULIC OIL FILTER
3. "TOP OFF" HYDRAULIC OIL TANK
4. TORQUE WHEEL HUB NUTS TO 325 FT LBS
5. GREASE BLADE ARM PIVOTS AT BASE OF BLADE ARMS (near tires)
6. GREASE FRONT CASTER WHEEL AND INSPECT FOR DAMAGE TO TREAD
7. USE COMPRESSED AIR OR WATER PRESSURE TO REMOVE DIRT AND DUST FROM ENGINE COOLING RADIATOR AND HYDRAULIC OIL HEAT EXCHANGER
8. CHECK AND TIGHTEN ALL HYDRAULIC FITTINGS
9. INSPECT HYDRAULIC HOSES FOR DAMAGE
10. CHECK ENGINE COOLANT LEVEL AND TEST COOLANT VALIDITY
11. INSPECT ENGINE COOLING FAN BELT
12. USE COMPRESSED AIR TO CLEAN DEBRIS FROM ALTERNATOR
13. INSPECT AND TIGHTEN ALL JOYSTICK STEERING LINKAGES

#### 100 HOUR MAINTENANCE: (in addition to 50 hr maintenance requirements)

1. DRAIN AND REPLACE HYDRAULIC OIL AND FILTER
2. REPLACE ENGINE AIR FILTER
3. INSPECT ALL PROPANE FITTINGS AND HOSES FOR LEAKS USING SOAPY WATER

### BE AWARE OF THE EFFECTS OF HARSH ENVIRONMENTS TO THE SCRAPER EQUIPMENT

- A. The constant and continuous impacts of ceramic tile removal could cause premature loosening of bolts and nuts over entire machine
- B. While operating machine with a hydraulic attachment, monitor oil temperature closely
- C. when operating in dusty "demolition" type work, monitor the engine temperature, as the dust can cause the cooling fins of radiator to become obstructed causing engine overheating. Dust accumulating on engine air cleaner will cause improper fuel mixture, resulting in excessive exhaust emissions. Monitor the warning light on instrument panel for indications.
- D. Use of non-marking (white) tires on ceramic tile, marble, or sharp edged debris will result in extreme tire damage. Black tires are recommended
- E. carpet removal will generally result in front transport caster being wrapped with stray carpet strings. Remove debris from wheel daily to prevent irreparable damage to wheel tread

## SAFETY

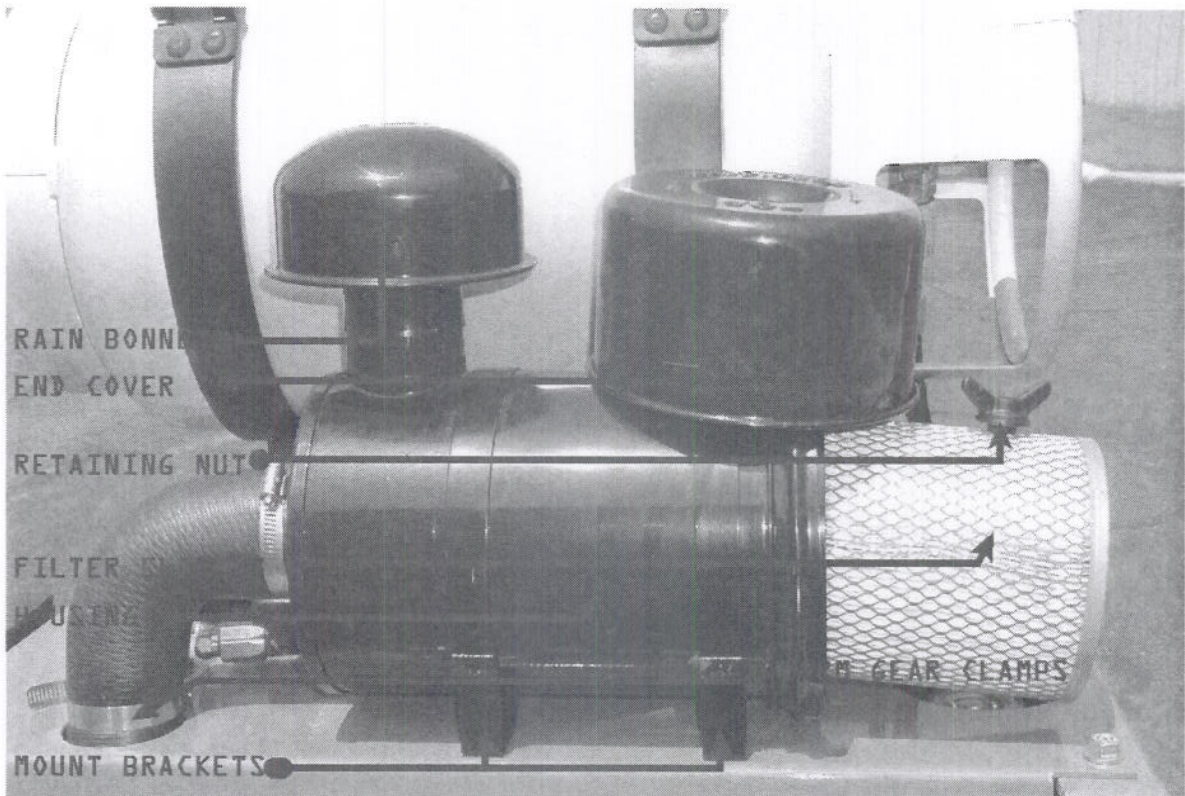
# WARNING

**CARBON MONOXIDE can cause severe nausea, fainting or death.**

**Do not operate engine in closed or confined area without proper ventilation.**

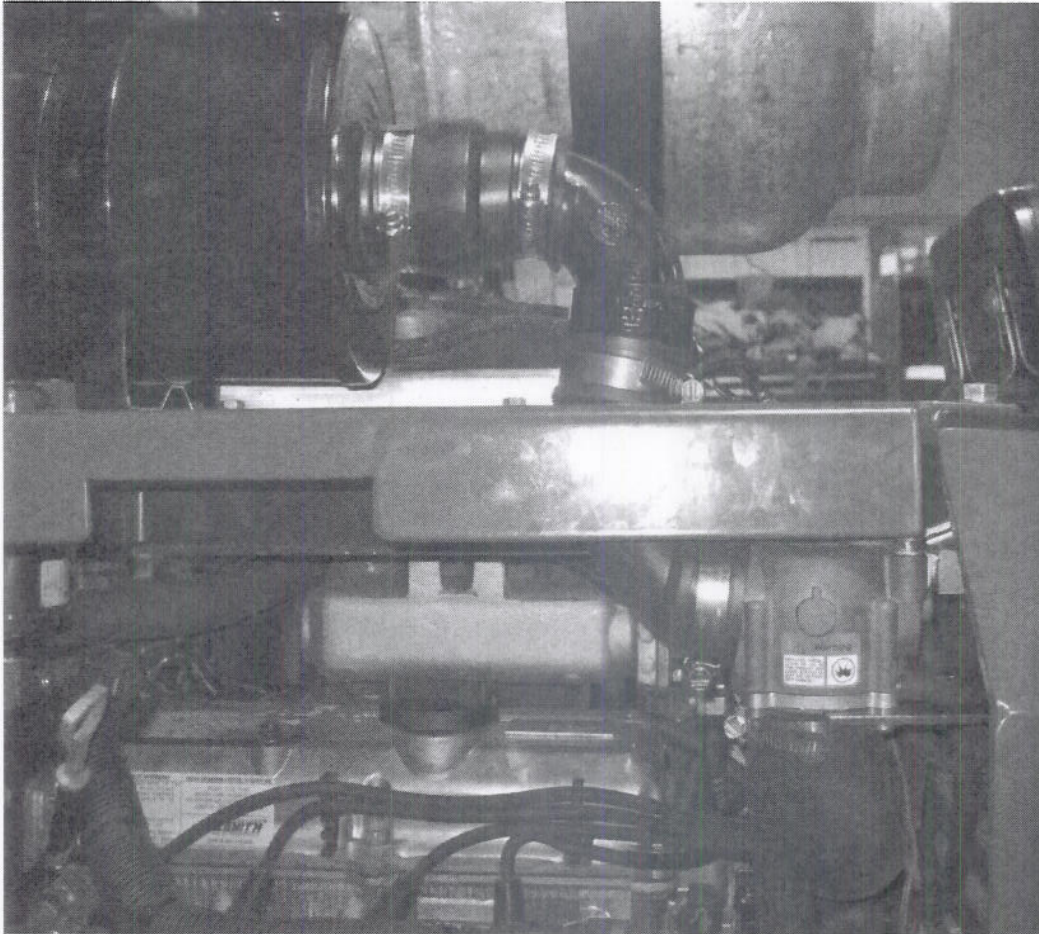


## BMS-T4200 AIR FILTER ASSEMBLY



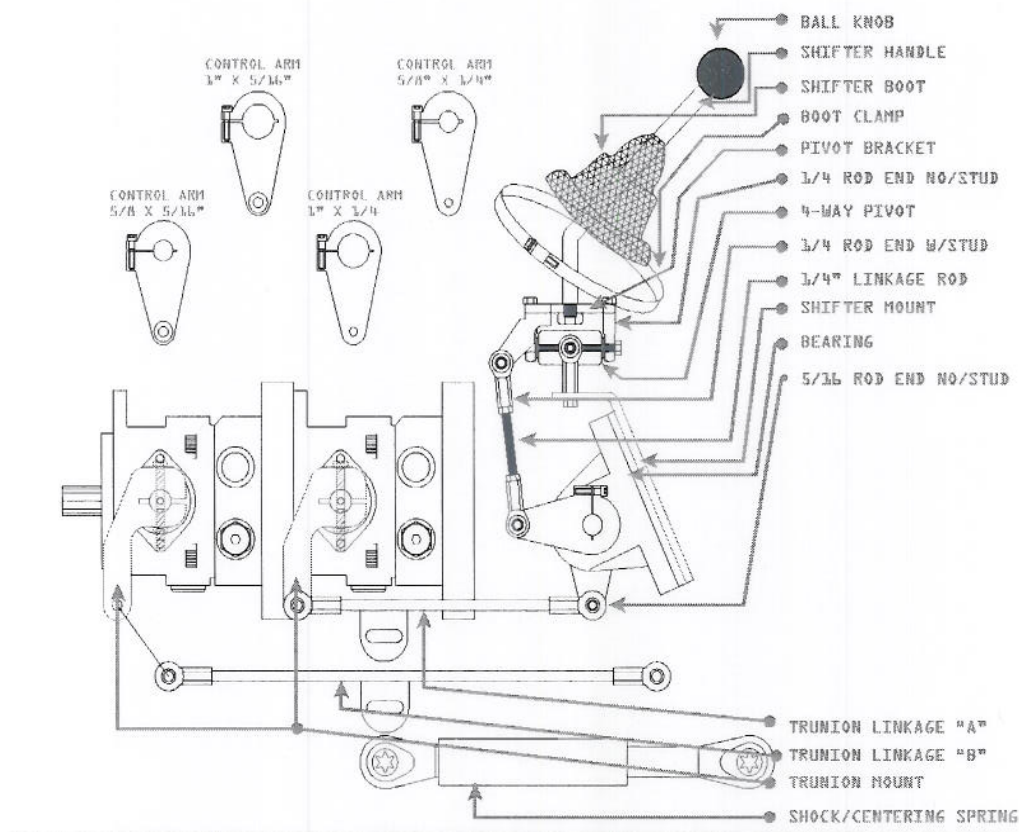
<b>DESCRIPTION</b>	<b>QTY</b>	<b>PART NUMBER</b>
End Cover	1	TWE-027
Retaining Nut	1	TWE-029
Housing	1	TWE-028
Mount Bracket	2	TWE-030
Worm Gear Clamp	1	TWE-034
Complete Assembly	1	TWE-026
Air filter Element	1	TWE-033
Rain Bonnet	1	TWE-035





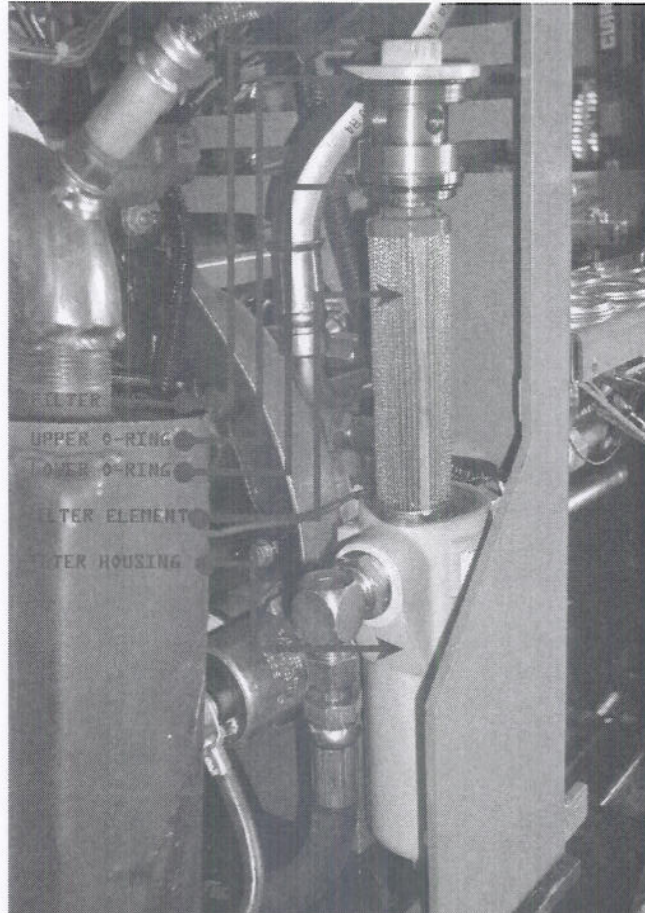
Oxygen Sensor	1.0	1	Z410-003
Switch, Oil pressure	1.0	1	Z410-004
Mixer, Fuel	1.0	1	Z410-005
Start Kit	1.0	1	Z410-006
Lock-Off, Fuel solenoid	1.0	1	Z410-007
Gasket, Head	1.0	1	Z410-008
Cover, Timing belt Upper	1.0	1	Z410-009
Cover, Timing belt Lower	1.0	1	Z410-010
			Z410-011
Comm port plug w/cover	1.0	1	Z410-012
Starter for 1.0 Hyundai		1	Z410-013
Relay, Starter	1.0	1	Z410-014
Fan, Pusher	1.0	1	Z410-015

## BMS-T4200 JOYSTICK ASSEMBLY



DESCRIPTION	QTY	PART NUMBER
Ball knob	1	TSJ-001
Shifter handle	1	TSJ-002
Shifter boot	1	TSJ-003
Boot clamp	1	TSJ-004
Pivot bracket	1	TSJ-005
1/4" rod end no/stud	4	TSJ-006
4-way pivot	1	TSJ-007
1/4" rod end w/stud	4	TSJ-008
1/4" linkage rod	2	TSJ-009
Shifter mount	1	TSJ-010
Bearing	2	TSJ-011
5/16 rod end no/stud	4	TSJ-012
Trunion linkage "A"	1	TSJ-013
Trunion linkage "B"	1	TSJ-014
Trunion mount	2	TSJ-015
Shock/centering spring	2	TSJ-016
Control arm 1" x 5/16"	1	TSJ-017
Control arm 5/8" x 1/4"	1	TSJ-018
Control arm 5/8" x 5/16"	1	TSJ-019
Control arm 1" x 1/4"	1	TSJ-020
Crossover tube	1	TSJ-021
Crossover shaft	1	TSJ-022
Crossover tube bushing	2	TSJ-023
Complete joystick (less handle, boot, knob, clamp)	1	TSJ-024

## BMS-T4200 HYDRAULIC FILTER ASSEMBLY



<b>DESCRIPTION</b>	<b>QTY</b>	<b>PART NUMBER</b>
Filter Cap Nut	1	TWH-021
Upper O-Ring Seal	1	TWH-022
Lower O-Ring Seal	1	TWH-023
Filter Element	1	TWH-024
Filter Housing	1	TWH-025



## BMS-T4200 FRAME AND COWLING PARTS

DESCRIPTION	QTY	PART NUMBER
Front Caster	1	TWF-001
Front caster wheel only	1	TWF-002
Frame	1	TWF-003
Rear Plate	1	TWF-004
Front Plate	1	TWF-005
Foot Step	1	TWF-006
Left Instrument Panel	1	TWF-007
Right Instrument Panel	1	TWF-008
Front Cowling	1	TWF-009
Rear Cowling	1	TWF-010
Top Cowling	1	TWF-011
Propane Tank Brackets	1	TWF-012
Throttle Handle	1	TWF-013
Throttle Handle Bracket	2	TWF-014
Rear Weight Hanger	2	TWF-015
Wheel Scraper	2	TWF-016
Pivot Bar	1	TWF-017
Pivot Bar Retainer Ring	2	TWF-018
Pivot Bar Inner Spacer	2	TWF-019
Pivot Bar Outer Spacer	2	TWF-020
Right Arm	1	TWF-021
Left Arm	1	TWF-022
Crossover Arm	1	TWF-023
Crossover Arm Pin	2	TWF-024
Blade Bar Mount Plate	1	TWF-025
Blade Bar 24"	1	TWF-026
Blade Bar Top 24"	1	TWF-027
Blade Bar Top "mount bolts" ¼-10 x 2 ¼"	2	TWF-028
Blade Bar Top "clampbolts" ½-13 x 1 ½	2	TWF-029
Blade Bar 8"	1	TWF-030
Blade Bar Top 8"	1	TWF-031
Blade Bar Mounting Bolts ½-13 x 2	2	TWF-032
Blade Bar Pivot Pins	2	TWF-033
Rear Weights	7	TWF-034
Side Rear Weights	14	TWF-035
Side Front Weights	14	TWF-036
Engine Mount Plate	1	TWF-037
Side Cowling	2	TWF-038
Blade Positioning Valve Mount	1	TWF-039
Accessory Valve Mount	1	TWF-040
Hydraulic Tank Assembly	1	TWF-041
Seat Mount Plate	1	TWF-042
Seat Plate Hinge	1	TWF-043
Battery Tie Down Bar	1	TWF-044
Right Side Weight Cover	1	TWF-045
Left Side Weight Cover	1	TWF-046
Right side Panel	1	TWF-047
Left Side Panel	1	TWF-048
Accessory Control Handle	1	TWF-049
Wheel Lug Bolts	10	TWF-050
Wheel Castle Nut	2	TWF-051
Side Cowling Latch	4	TWF-052
Rear Tires	2	TWD-001

## BMS-T4200 HYDRAULIC COMPONENTS

DESCRIPTION	QTY	PART NUMBER	
Hydrostat Assembly	1	TWH-001	
Section 1 of hydrostat assembly (nearest engine)	1	TWH-001A	
Section 2 of hydrostat assembly	1	TWH-001B	
Section 3 of hydrostat assembly (double gear pump)	1	TWH-001C	
Exchange Valves	2	TWH-002	
Accessory Valve	1	TWH-003	
Hydraulic Filter Assembly	See Detailed List		
Wheel Motor	2	TWH-005	
Wheel Motor Hub	2	TWH-006	
Hydraulic Oil Heat Exchanger	1	TWH-007	
Joystick Valve	1	TWH-008	
Cylinder Clevis for tilt or lift cylinder	1	TWH-009	
Hydrostatic Assembly –Core Charge		TWH-010	
Cylinder Tilt Pin	1	TWH-011	
Hydraulic Heat Exchanger (fan)	1	TWH-015	
Lift and Tilt Cylinder	3	TWH-016	
Hydraulic Oil Heat Exchanger (thermostat)	1	TWH-017	
Oil Cooler Fan (A20)	1	TWH-018	
Tranny Cable (Ford Engine)	1	TWH-019	
Cap, Hydraulic filler 3PSI	1	TWH-020	
Filter Cap Nut	1	TWH-021	
Upper O-Ring Seal	1	TWH-022	
Lower O-Ring Seal	1	TWH-023	
Filter Element	1	TWH-024	
Filter Housing	1	TWH-025	
Wheel Motor Hose (Comer) left-ft	1	27"	TWH-050H
Wheel Motor Hose (Comer) left rear	1	33"	TWH-051H
Wheel Motor Hose (Comer)rt-ft	1	27"	TWH-052H
Wheel Motor Hose (Comer) RT rear	1	38"	TWH-053H
Wheel Motor Hose (Comer)	4	7"	TWH-065
Flow Valve Cartridge	1		TWH-055
Relief Valve Hose	1	35.5"	TWH-056
Pump Suction Hose	1	25.5"	TWH-057
Gear pump pressure hose	1	22.5"	TWH-058
Crossover Hose (charge)	1		TWH-059
Lift Cyl hose #4	1	16"	TWH-060
Hose #12 x 23" w/45 & 90	1	23"	TWH-066
Hose #8 x 18-1/2" w/2pc straight	1	18-1/2"	TWH-067
Magnetic Strainer	4		TWH-081

## BMS-T4200 ELECTRICAL COMPONENTS

<u>DESCRIPTION</u>	<u>QTY</u>	<u>PART NUMBER</u>
IGNITION 10 AMP ATC FUSE	1	TWE-001
<b>Oil Temp Gauge</b>	1	TWE-002
<b>Ignition Switch (Ford engine)</b>	1	TWE-003
<b>Ignition Switch (Nissan Engine)</b>	1	TWE-003N
<b>Ignition Switch (Hyundai Engine)</b>	1	TWE-003H
<b>Ignition Hyundai key</b>	1	TWE-003Hkey
<b>Murphy Switch</b>	1	TWE-004
<b>Ignition Module</b>	1	TWE-005
<b>MAP Sensor</b>	1	TWE-006
<b>Oil Temp Sender</b>	1	TWE-007
Electric 14 AMP SFE FUSE	1	TWE-008
<b>Volt Meter</b>	1	TWE-009
<b>Engine temp gauge</b>	1	TWE-010
<b>Twister Oil Pressure Gauge</b>	1	TWE-011
<b>Hour Meter</b>	1	TWE-012
<b>Murphy Switch Boot</b>	1	TWE-013
<b>Back-Up Alarm</b>	1	TWE-014
<b>Warning Lamp (yellow)</b>	1	TWE-015
<b>Hyundai Coolant Tank</b>	1	TWE-023H
<b>Hyundai Engine</b>	1	TWE-024H
<b>Hyundai Rotary Switch</b>	1	TWE-025H





13201 North Santa Fe Avenue • Oklahoma City, OK 73114 • Ph: 800-256-3440 • F: 405-478-8608 [blastrac.com](http://blastrac.com)

## Product Warranty

### Standard Equipment Products:

Blastrac warrants its Blastrac Standard Equipment Products against defects in quality of material and workmanship, under normal and proper use for a period of **1 Year** from the date of delivery, as noted on the returned warranty registration card, or, in the case of **Rental Fleet Machines, 180 Days** from the date of assignment to Rental Fleet. This warranty is non-transferable and is extended to machines purchased and entered into the normal service of surface preparation by a recognized professional or qualified contractor. Blastrac makes this warranty only to the buyer who purchases the products directly from Blastrac or its Authorized Distributor. This warranty does not include expendable parts such as, but not limited to, blades, blast wheels, wear plates, liners, seals, and electrical components. All purchased parts utilized in the manufacture will be honored to the original manufacturer's specified warranty.

If the buyer does not return the warranty card or register the product online at [www.blastrac.com](http://www.blastrac.com) within 30 days after taking delivery of Blastrac Standard Equipment Products, the warranty period is limited to 6 months from the date of delivery noted on shipping receipt.

### Hand Tool Products:

Blastrac warrants its BLASTRAC Hand Tool Products, including hand grinders and accessories, against defects in material and workmanship under normal and proper use for a period of **90 days** from the date of delivery or, in the case of Rental Fleet Machines, from the date of assignment to a Rental Fleet. Blastrac makes this warranty only to the buyer who purchases the products directly from Blastrac or its authorized distributor. This warranty does not include expendable parts such as blades.

If the buyer does not return the warranty card, or register online at [www.blastrac.com](http://www.blastrac.com) within 15 days after taking delivery of Blastrac Hand Tool Products, the warranty period is limited to 30 days from the date of delivery noted on shipping receipt.

## WARRANTY TERMS AND CONDITIONS:

1. Blastrac's obligation under this warranty is limited to the replacement or repair, at Blastrac's option, of products and does not include, labor, the cost of transportation, loss of operating time, or normal maintenance services.

2. This warranty does not apply to failure occurring as a result of abuse, misuse, negligence, corrosion, erosion, normal wear and tear, alterations or modifications made to products without the express written consent of Blastrac.

3. The buyer must submit all warranty claims no later than thirty (30) days after buyer becomes aware of the basis for any such claim, or should have become aware of the basis for any such claim in the exercise of reasonable diligence.

To return parts for warranty consideration, please call Blastrac Customer Service at **800-256-3440**. Your customer service representative will obtain the necessary information to complete the Blastrac Returned Merchandise Authorization (RMA) Form. Blastrac will then send the RMA form to the customer authorizing the return of the parts for warranty evaluation. The parts must be received within sixty (60) days following the RMA origination date or the warranty claim will be denied. Once the parts are received they will be evaluated for warranty.

If the customer cannot wait for the evaluation/replacement of the parts during this process, the customer must issue a new purchase order to Blastrac for the replacement parts before they can be shipped. Once the evaluation process is complete and parts are deemed a valid warranty claim, a credit will be issued against this invoice.

**4.** The buyer may not return Blastrac products without written authorization to do so through a Blastrac RMA.

**5.** Blastrac reserves the right to inspect and determine the scope of its warranty responsibilities for any returned Blastrac products.

**6.** Blastrac makes no warranty with respect to accessories it does not manufacture, including but not limited to, engines, motors, batteries, tires and all other parts. See component manufacture warranty.

**7.** Blastrac reserves the right to make product changes or improvements without prior notice and without undertaking any obligation for such changes or improvements on previously sold products.

**8.** The above warranty conditions can only be altered by Blastrac. Blastrac must confirm alterations in writing for each specific transaction.

**9.** Blastrac reserves the right to modify this warranty for used or demo products on an individual transaction basis. Blastrac will include warranty modifications on its invoices for used or demo products.

**10.** BLASTRAC DOES NOT AUTHORIZE ANY PERSON, REPRESENTATIVE, SERVICE OR SALES OUTLET TO MAKE ANY WARRANTY DIFFERENT FROM THIS PRODUCT WARRANTY.

**11.** EXCEPT FOR ITS PRODUCT REPAIR OR REPLACEMENT OBLGATIONS DESCRIBED IN THIS PRODUCT WARRANTY, UNDER NO CIRCUMSTANCES SHALL BLASTRAC BE LIABLE TO THE BUYER, OR ANY OTHER PERSON, FOR ANY DIRECT, INCIDENTAL, OR CONSEQUENTIAL DAMAGES RESULTING FROM THE USE OF THE BLASTRAC PRODUCT, OR FOR ANY SPECIAL OR CONSEQUENTIAL DAMAGES OF ANY CHARACTER, INCLUDING WITHOUT LIMITATIONS, DAMAGES FOR ANY LOSS OF GOODWILL, WORK STOPPAGE, OR ANY AND ALL OTHER COMMERCIAL DAMAGES OR LOSSES.

**12.** BLASTRAC MAKES NO OTHER PRODUCT WARRANTIES, EXPRESS OR IMPLIED, INCLUDING, BUT NOT LIMITED TO, THE IMPLIED WARRANTIES OF MERCHANTABILITY AND FITNESS FOR A PARTICULAR PURPOSE.



 **BLASTRAC® Warranty Registration Notification**



**IMPORTANT!**

**TO THE DELIVERING DISTRIBUTOR OR END USER**

To ensure the proper warranty coverage is extended to the owner of this machine, fill in the necessary information below **COMPLETELY** and **ACCURATELY** and retain for your records. **Go to [www.blastrac.com](http://www.blastrac.com) and register online.** Click on the Register icon in the left column of the homepage, and fill out the product registration form with the same information that will be recorded here.

**The warranty period will start upon the delivery date of the machine.**

The distributor or the end user must provide the machine warranty information when the machine is delivered. Registration of the machine will extend the warranty period from the recorded delivery date entered with product registration. **Failure to comply will make any and all warranties on the equipment void after 6 months.**

**OWNER/END USER'S REFERENCE INFORMATION**

Delivery Date _____	Machine Model No. _____
Delivering Distributor's Name and Address _____	Machine Serial No. _____
_____	Modifications _____
_____	_____
_____	_____
_____	_____
_____	_____

Signature of Delivering Distributor's Representative \_\_\_\_\_

Blastrac is a registered trademark of Blastrac, NA  
Fold and Detach Here if Mailing

**Warranty Registration**

**IMPORTANT!** To ensure that your Blastrac® machine is covered under warranty, please provide the information recorded here by registering online at [blastrac.com](http://blastrac.com), or complete this page and fax to 866-485-1046, or if you prefer, detach and mail to:

**Blastrac, 13201 North Santa Fe Avenue, Oklahoma City, OK 73114-9901**

(Please print legibly)

Company \_\_\_\_\_

Address \_\_\_\_\_

City, State, & Zip \_\_\_\_\_

Telephone No. \_\_\_\_\_ Contact Person \_\_\_\_\_

Date of Purchase \_\_\_\_\_ Date Received \_\_\_\_\_

Machine Model No. \_\_\_\_\_ Serial No. \_\_\_\_\_

Distributor Name \_\_\_\_\_

End User Name \_\_\_\_\_

End User E-mail \_\_\_\_\_